



BOSCOSEAL RC2

FLEXIBLE ACRYLIC WATERPROOFING MEMBRANE

KEY FEATURES

- Water based, environmentally friendly.
- Ability to bridge cracks.
- Can be tiled over successfully.
- Protect concrete against carbonation and attack from pollutants.
- Foot trafficable.
- Compatible with most materials like Bitumen and Polyurethane products.
- Prevent corrosion of metals.
- Withstand strong ultraviolet rays.
- Remains flexible over wide range of substrates.

DESCRIPTION

Boscoseal RC2 is a single component acrylic flexible waterproofing coating that cures into a tough elastic waterproofing film.

RECOMMENDED USES

Designed as exposed waterproofing membrane to flat and pitched roof for residential & commercial structures, to terminate around pipes, conduits and for continuity of sheet membranes onto parapet walls etc.

Designed for prevent water seepage on;

- External walls
- Metal roof & gutters
- Roof tiles

As reflective top coat on compatible exposed roofing materials.

For old and new structures Re-roofing.

SUBSTRATE TYPES

Bond well to:

- Concrete
- Cement sand backings
- Steel
- Metal
- Timber
- Brick

SUBSTRATE PREPARATION

All substrates shall be sound and free from dust, excess

PERFORMANCE PROPERTIES

Typical properties conducted at 23°C and 50% RH

Colour	White, Grey, Green
Resin	Acrylic Polymer
Density	Approx. 1.25kg/litre
Solid Content	Approx. 60% by weight
Ultimate Elongation	> 200%
Ultimate Tensile Strength	> 6 Mpa
Adhesion Strength	> 2.5N/mm ²
Shore A Hardness	> 60
UV Exposure (2000 hours)	No colour change. No cracks.
Drying Time	24 hours depending on temperature and RH
Application Temperature	-10°C to 50°C
Service Temperature	-10°C to 50°C

mortar, oil or other loose particles.

Cracks or honeycombs shall be repaired using suitable non-shrink filler.

Old bitumen joints, grease and oil contaminants shall be thoroughly removed and joints filled with non-shrink cement mortar or approve sealant.

On existing surfaces must be thoroughly cleaned before applying Boscoseal RC2 waterproofing membrane.

CONCRETE ROOF WATERPROOFING

For slightly damp concrete, apply 2 coats Dampseal HP at the rate of minimum 0.5kg/m² per coat. Allow to cure prior to Boscoseal RC2 application.

APPLICATION INSTRUCTION

PRIMING

Prime substrate with Bostik Multiprime at the rate of 5-8m² per litre depend on substrate condition, prior to Boscoseal RC2 application.

MIXING

Stir product to an even smooth consistency before use.

APPLICATION

Boscoseal RC2 can be applied using brush or roller at the rate of one (1) litre per square meter. The application shall be done in a minimum of two (2) layers. The 1st layer in one direction and the second layer in a direction perpendicular to the 1st layer. Leave 1st layer to set between 2 to 4 hours before applying the 2nd layer.

PLACING

Concrete flat roof waterproofing;

Apply Boscoseal RC2 as neat, on the prepared surface at a rate of 1 liter/m² per layer. Apply minimum 2 layers.

For large roof areas, a fabric mesh reinforcement may be bedded between the 1st and 2nd layer of Boscoseal RC2 to help control film thickness and to increase tensile strength. Apply final coat to achieve film and colour consistency.

On metal roof;

Priming is required only where the paint work is weak. Apply anti-rust primer as primer coat before applying 2 layers of Boscoseal RC2 waterproofing.

On external walls;

Prime substrate with Bostik Multiprime. Apply 2 finishing coats Boscoseal RC2 waterproofing membrane.

RECOMMENDED COVERAGE

1 kg per m² at 1mm wet film thickness or 0.6mm dry film thickness. Application of two layers at this coverage rate will provide the required 1.2mm dry film thickness depending on substrate condition.

Note : For the whole system required, layer or number of coating is only for reference, and subject to substrate condition. Therefore to achieve accuracy and reliable results, it should follow the consumption usage as per recommendation.

PACKAGING

25 kg plastic pail

The information and recommendations relating to the application and end-use of the product are given in good faith and based on tests which we believe to be reliable. Differing materials, substrates, environments, site conditions, and product storage, handling and application may affect results. However, no warranty in respect of merchantability or fitness for a particular purpose, nor any liability arising out of any legal relationship, whatsoever, can be inferred either from this information, or from any written recommendations, or from any other advice offered. No guarantee of their accuracy can be made because of the great range of field conditions and variation encountered in raw materials, manufacturing equipment and methods. Thus, the products are sold with limited warranty only, and on condition that purchasers will make their own tests to determine the suitability of the product for their particular purposes. Under no circumstances will Bostik be liable to anyone except for replacement of the products or refund of the purchase price.

CLEAN UP

All brushes, rollers, trays, buckets and surroundings shall be cleaned with clean water before the product sets.

STORAGE AND SHELF LIFE

Boscoseal RC2 has a shelf life of 12 months. Store all materials in a cool dry place, in an elevated condition.

HEALTH AND SAFETY

Boscoseal RC2 is non-toxic. For personal precautions, protective gloves may be worn when handling this product.

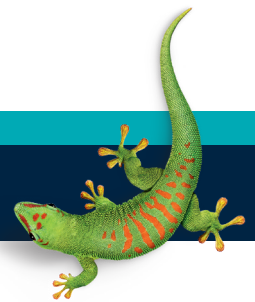


032-091-0800

Environmentally Preferred Coating

BOSTIK HOTLINE

Smart help
+606 678 9788



Bostik Findley (Malaysia) Sdn. Bhd. 1994010000474 (286152-V)

Lot 112 & 113, Kawasan Perindustrian Senawang,
70450 Seremban, Negeri Sembilan,
Malaysia

Tel : +606 678 9788 Fax : +606 678 9766

www.bostik.com
an Arkema company

This document supersedes all previously published literature.