



# BOSCOSEAL TORCH ON

FULLY BONDED TORCH-ON APPLIED WATERPROOFING MEMBRANE

## KEY FEATURES

Plastoelastomeric modified bitumen

- Good UV resistance (Mineral Finish)
- Good elasticity and durable
- Resistant to atmospheric pollutants and chemical environment

Spunbond polyester reinforcement

- Gives mechanical strength
- Accomodates thermal stress
- Provides dimensional stability

Sanded or Mineral chip finish

- Minimise UV heat and radiation
- Prolong life of membrane

## DESCRIPTION

Boscoseal Torch On is a fully-bonded plastoelastomeric modified bitumen waterproofing membrane consisting of visco-elastic resins and inert filler, reinforced with spunbond polyester carrier.

Type:

Boscoseal Torch On 3P - Sanded Finish (3mm)

Boscoseal Torch On 4P - Sanded Finish (4mm)

Boscoseal Torch On 3P - Mineral Finish (4kg/m<sup>2</sup>)

Boscoseal Torch On 4P - Mineral Finish (4.5kg/m<sup>2</sup>)

Boscoseal Torch On 5P - Mineral Finish (5.3kg/m<sup>2</sup>)

## RECOMMENDED USES

- Trafficable roof
- Non-trafficable roof
- Roof garden
- Inverted Roof
- Plaza decks
- Landscape areas
- Roof refurbishment

## SUBSTRATE TYPES

Bond well to :

- Concrete
- Cement sand backings
- Steel deck
- Metal deck
- PVC pipes
- Old stable finishes

## SURFACE PREPARATION

On new roof installation, the floor screed shall be done at a recommended slope ranging from 1 to 5% between 25 to 50 mm thickness to achieve gradient and crossfalls.

Existing roof systems shall be thoroughly inspected and prepared to provide a structural sound, smooth, dry substrate for the attachment of Boscoseal Torch On membrane.

Areas where the membrane is to be installed must be clean, dry, smooth and treated with a coat of Bostik Bituminous Primer to provide good bonding between the membrane and the substrate.

## APPLICATION INSTRUCTION

### PRIMING

Before installation, prime substrate with Bostik Bitumen Primer at the rate of 5m<sup>2</sup> per liter depend on substrate condition

### PLACING

Starting from the lowest point where the drainage outlet is positioned, unrolled the Boscoseal Torch On membrane from its original packaging and placed on the correct position where it will be torched later.

The membrane is then re-rolled without changing its original alignment. Slowly unrolled again and whilst unrolling, heat up the burn-off film on the underside of the membrane by a propane gas torch at controlled temperature causing surface changes and subsequent adhesion to the substrate. All overlaps, edges end and seams must be overlap by at least 75 to 100mm and shall be formed to shed water.

The bitumen compound coming out from the lightly pressed heated overlap of the membrane should be carefully leveled by spreading it on the lap with a heated round trowel to form a sealing bead.

## PACKAGING

1m width x 10m length per roll

## STORAGE AND SHELF LIFE

Store Boscoseal Torch On in vertical position at temperature between 5°C and 30°C in cover and dry place out of direct sun light.

## PERFORMANCE PROPERTIES

| Characteristic   | Test Method           | Sanded Membrane        |                        | Mineral Membrane       |                        |                          |
|--|-----------------------|------------------------|------------------------|------------------------|------------------------|--------------------------|
|  |                       | 3mm                    | 4mm                    | 4 kg                   | 4.5kg                  | 5.3kg (4mm)              |
| Watertightness   | EN 1928:2000 Method A | Pass                   | Pass                   | Pass                   | Pass                   | Pass                     |
| External fire performance  | EN 13501-5            | Class F Roof           | Class F Roof           | Class F Roof           | Class F Roof           | Class F Roof             |
| Reaction to fire   | EN 13501-1            | Class F                | Class F                | Class F                | Class F                | Class F                  |
| Ultimate Tensile Strength<br>Resistance at break :<br>Longitudinal<br>Transverse | EN 12311-1            | 500N/50mm<br>400N/50mm | 500N/50mm<br>400N/50mm | 400N/50mm<br>300N/50mm | 400N/50mm<br>300N/50mm | 600N/50mm<br>400N/50mm   |
| Ultimate Tensile Strength<br>Elongation at break :<br>Longitudinal<br>Transverse | EN 12311-1            | 35%<br>35%             | 35%<br>35%             | 35%<br>35%             | 35%<br>35%             | 30%<br>35%               |
| Resistance to tearing<br>Longitudinal<br>Transverse                              | EN 12310-1            | 130N<br>130N           | 130N<br>130N           | 130N<br>130N           | 130N<br>130N           | 150N ± 20%<br>150N ± 20% |
| Resistance to impact   | EN 12691/A            | 800mm                  | 800mm                  | 700mm                  | 700mm                  | 900mm                    |
| Resistance to static loading   | EN 12730-1/B          | 10kg                   | 10kg                   | 10kg                   | 10kg                   | 10kg<br>"Method A"       |
| Flexibility at low temperature   | EN 1109               | 0°C                    | 0°C                    | 0°C                    | 0°C                    | -5°C                     |
| Creeping at heat   | EN 1110               | 100°C                  | 100°C                  | 100°C                  | 100°C                  | 110°C                    |
| Dimensional Stability  | EN 1107-1             | ± 0.3%                 | ± 0.3%                 | ± 0.3%                 | ± 0.3%                 | ± 0.7%                   |
| Water vapour transmission  | EN 1931               | 20,000µ                | 20,000µ                | 20,000µ                |                        | 20,000µ                  |
| Shear resistance of joints   | EN 12317-1            | 400/300N per 50mm      | 400/300N per 50mm      | 300/200N per 50mm      |                        | 500/300N per 50mm ± 20%  |

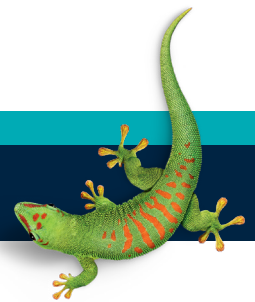
## HEALTH AND SAFETY

Suitable protection clothing, gloves and eye protection should be worn. For more detailed information, refer to Material Safety Data Sheet.

The information and recommendations relating to the application and end-use of the product are given in good faith and based on tests which we believe to be reliable. Differing materials, substrates, environments, site conditions, and product storage, handling and application may affect results. However, no warranty in respect of merchantability or fitness for a particular purpose, nor any liability arising out of any legal relationship, whatsoever, can be inferred either from this information, or from any written recommendations, or from any other advice offered. No guarantee of their accuracy can be made because of the great range of field conditions and variation encountered in raw materials, manufacturing equipment and methods. Thus, the products are sold with limited warranty only, and on condition that purchasers will make their own tests to determine the suitability of the product for their particular purposes. Under no circumstances will Bostik be liable to anyone except for replacement of the products or refund of the purchase price.

### BOSTIK HOTLINE

**Smart help**  
**+606 678 9788**



**Bostik Findley (Malaysia) Sdn. Bhd.** 1994010000474 (286152-V)

Lot 112 & 113, Kawasan Perindustrian Senawang,  
70450 Seremban, Negeri Sembilan,  
Malaysia

Tel: +606 678 9788 Fax: +606 678 9766

**www.bostik.com**  
**an Arkema company**

This document supersedes all previously published literature.