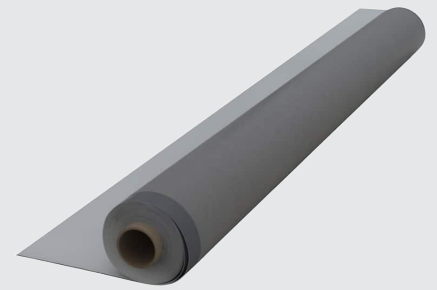


EverGuard® TPO  
**GAF** Fleece-Back Membrane  
45-mil 60-mil 80-mil



## Description:

Combine performance and value with EverGuard® TPO Fleece-Back Membrane 45-mil, 60-mil, and 80-mil.

Factory-applied polyester fleece lets you offer the proven performance of EverGuard® TPO, while increasing durability and reducing labor:

- Provides enhanced puncture resistance against foot traffic, hail, and other impacts\*
- Does not require a slip sheet when installed over a variety of existing roof systems
- Guarantees available according to thickness, with coverage up to 30 years for 80-mil\*\*

## Accessories:

Fabricating details on-site can be time-consuming, costly, inconsistent, and even unreliable. EverGuard® TPO prefabricated accessories save you time and labor, deliver consistent performance, and create a uniform aesthetic.

\* GAF warranties and guarantees do not provide coverage against traffic except where GAF walkways are applied, or against hail or other impact. Refer to [gaf.com](http://gaf.com) for more information on warranty and guarantee coverage and restrictions. Hail or puncture resistance coverage may be available for purchase for eligible systems. Contact GAF for more information.

\*\* Additional requirements apply. Contact GAF for more information. See applicable guarantee, available at [gaf.com](http://gaf.com), for complete coverage and restrictions.

## Installation:

Explore installation options — EverGuard® TPO Fleece-Back Membrane can be installed with a wide range of applications:

- **Mechanically attached** — quick, cost-effective, and available practically year-round
- **Adhered** — effective with EverGuard® WB181 Bonding Adhesive (water-based) or hot asphalt for a smooth appearance and excellent wind uplift
- **LRF Adhesive O** — low-rise foam that's low-VOC, ideal for minor surface irregularities, and available in a cartridge or 5-gallon container
- **LRF Adhesive M** — low-rise foam that's similar to LRF-O and can also be used for ISO insulation applications
- **LRF Adhesive XF** — 2-part low-rise foam that's Low-VOC, ideal for minor surface irregularities, and can adhere up to 24 squares of Fleece-Back Membrane.
- **OlyBond 500** — 2-part low-rise foam that's Low-VOC, ideal for minor surface irregularities, and can adhere up to 24 squares of Fleece-Back Membrane



**MADE IN THE U.S.A.**  
WITH DOMESTIC AND IMPORTED MATERIALS.  
AMERICAN JOBS IN AMERICAN FACTORIES.



Visit [gaf.com](http://gaf.com)

For additional information, contact GAF Design Services at 1-877-423-7663 or [designservices@gaf.com](mailto:designservices@gaf.com)

We protect what matters most™



Physical Properties (ASTM D6878)					
Type	ASTM Test Method	ASTM D 6878 Minimum	EverGuard® TPO Fleece-Back Membrane Test Values (approx.) <sup>2</sup>		
			45 mil	60 mil	80 mil
Nominal Thickness	ASTM D 751	0.039" (0.99 mm)	0.045" (1.14 mm)	0.060" (1.52 mm)	0.080" (2.03 mm)
Breaking Strength	ASTM D 751 Grab Method	220 lbf (38.5 kg)	375 lbf x 330 lbf (559 x 492 kg/m)	400 lbf x 360 lbf (596 x 536 kg/m)	440 lbf x 390 lbf (656 x 581 kg/m)
Factory Seam Strength	ASTM D 751	66 lbf (98.34 kg/m)	115 lbf (membrane failure) (171 kg/m)	145 lbf (membrane failure) (216 kg/m)	155 lbf (membrane failure) (231 kg/m)
Elongation at Break	ASTM D 751	15%	30%	30%	30%
Heat Aging	ASTM D 573	90% Retention of Breaking Strength and Elongation at Break	100%	100%	100%
Tear Strength	ASTM D 3045 8" x 8" sample (203 mm x 203 mm)	55 lbf (81.95 kg/m)	90 lbf x 120 lbf (134 x 179 kg/m)	70 lbf x 130 lbf (104 x 194 kg/m)	100 lbf x 180 lbf (149 x 268 kg/m)
Puncture Resistance	FTM 101 C Method 2031	Not Established	>350 lb. (159 kg)	>380 lb. (172 kg)	>380 lb. (172 kg)
Cold Brittleness	ASTM D 2137	-40° C	-40° C	-40° C	-40° C
Permeance	ASTM E 96	Not Established	0.08 Perms	0.08 Perms	0.08 Perms
Dimensional Change	ASTM D 1204 @ 158°F (70°C), 6 hrs.	±1%	0.2%	0.4%	0.4%
Water Absorption	ASTM D 471 @ 158°F (70°C), 1 week	±3.0%	0.7%	0.7%	0.7%
Hydrostatic Resistance	ASTM D 751 Method D	Not Established	390 psi	430 psi	430 psi
Ozone Resistance	ASTM D 1149	No visible deterioration @ 7x magnification	No visible deterioration @ 7x magnification	No visible deterioration @ 7x magnification	No visible deterioration @ 7x magnification
Weather Resistance	ASTM G 155 / D 6878	10,080 KJ / (m <sup>2</sup> · nm) at 340 nm	>20,000 KJ / (m <sup>2</sup> · nm) at 340 nm	>25,000 KJ / (m <sup>2</sup> · nm) at 340 nm	>25,000 KJ / (m <sup>2</sup> · nm) at 340 nm
Heat Aging	ASTM D 573	240°F (115° C), 32 weeks	60 weeks	60 weeks	60 weeks
Thickness Above Scrim	ASTM D 7635	Min 30% of Total Thickness	15.8 mil (Nominal)	22.1 mil (Nominal)	31.4 mil (Nominal)
<b>Available Guarantees</b>			Up to 20 years	Up to 25 years	Up to 30 years

NOTE: Additional requirements apply. Contact GAF for more information. See applicable guarantee, available at [gaf.com](http://gaf.com), for complete coverage and restrictions.

\*White Membrane Only




<sup>1</sup> Certain data is provided in MD (machine direction) x CMD (cross machine direction) format.

<sup>2</sup> Values stated are approximate and subject to normal manufacturing variation. These values are not guaranteed and are provided solely as a guide.

Sustainability Ratings/Certifications							
Cool Roof Rating Council (CRRC)							
Color	Rated Product ID#	Initial			Aged		
		Solar Reflectance (ASTM C 1549)	Thermal Emittance (ASTM C 1371)	Solar Reflectance Index (ASTM E 1980)	Solar Reflectance (ASTM C 1549)	Thermal Emittance (ASTM C 1371)	Solar Reflectance Index (ASTM E 1980)
White	0676-0027	0.76	0.90	94	0.68	0.83	81
LEED Information							
Manufacturing Locations		Mount Vernon, IN		New Columbia, PA		Cedar City, UT	



**EverGuard® TPO**  
**GAF Fleece-Back Membrane**  
 45-mil 60-mil 80-mil

Applicable Standards/Approvals			
	Miami Dade County Product Control Approved	UL Evaluation Report UL ER1306-01	ICC-ES Evaluation Report ESR-4676 (Cedar City, UT only)
	FM Approved (Refer to FM www.RoofNav.com for actual assemblies)	Meets or exceeds the requirements of ASTM D6878.	State of Florida Approved
	Classified by UL in accordance with ANSI/UL 790. (Refer to UL Product iQ for actual assemblies).	Meets or exceeds the requirements of the Texas Department of Insurance.	CRRC Rated - Can be used to comply with 2022 Title 24, Part 6, Cool Roof Requirements of the California Code of Regulations (White only)

Product Data					
Roll Size	Colors	Full Roll Size	Full Roll Weight (Average)	Half Roll Size	Half Roll Weight (Average)
45 mil	White, Tan, Gray	10' x 100' (3.05 x 30.5 m) (1,000 sq. ft. [92.9 sq.m])	270 lb. (122 kg)	5' x 100' (1.52 x 30.5 m) (500 sq. ft. [46.5 sq.m])	144 lb. (65 kg)
60 mil	White, Tan, Gray, Energy Tan, Energy Gray	10' x 100' (3.05 x 30.5 m) (1,000 sq. ft. [92.9 sq.m])	344 lb. (156 kg)	5' x 100' (1.52 x 30.5 m) (500 sq. ft. [46.5 sq.m])	185 lb. (84 kg)
80 mil	White, Tan, Gray	10' x 50' (3.05 x 15.24 m) (500 sq. ft. [46.5 sq.m])	238 lb. (108 kg)	5' x 50' (1.52 x 15.24 m) (250 sq. ft. [23.23 sq.m])	112 lb. (51 kg)
Storage	Store on pallets in a clean, dry area at temperatures below 100°F (38° C).				
Safety Warning	Membrane rolls are heavy. Employ at least two people to position and install.				

Note: Membrane rolls shipped horizontally on pallets, stacked pyramid-style and banded.

